



**ALASKA DIVISION OF HOMELAND SECURITY &  
EMERGENCY MANAGEMENT**  
SITUATION REPORT 24-092 • April 1, 2024



Toll-Free 1.800.478.2337

Anchorage Area 907.428.7000

SEOC 907.428.7100

<p><b><u>SEOC Preparedness Level</u></b>  Level 1 – Routine Operations.</p>	<p align="center"><a href="http://ready.alaska.gov">http://ready.alaska.gov</a></p>	<p><b><u>National Terrorism Advisory System:</u></b>  <a href="#">Read the NTAS Bulletin here</a></p>
<p><a href="#">Maritime Security (MARSEC)</a> Level:1- Minimum Appropriate Security Measures</p>	<p align="center"><b>WHO Novel Coronavirus Pandemic (COVID-19):</b> <a href="#">2019 Novel Coronavirus</a></p>	<p><b><u>Alaska Military Installation Force Protection Level:</u></b> FPCON Bravo</p>

(Significant changes from previous situation reports are red.)

**Significant Issues:**

**Fairbanks Silver Alerts**

Over the weekend, 2 Silver Alerts were issued by Alaska State Troopers in Fairbanks. SEOC coordinated with Alaska State Troopers to issue and publicize the Silver Alerts. Saturday afternoon, both individuals were located safe. SEOC then coordinated with AK State Troopers to cancel Silver Alerts.

**State of Alaska Department of Health (DOH)**

The DOH stands ready to assist with all aspects of public health and, in the event of a public health emergency, is supported by the SEOC and other state departments as required. For current information, see: <https://health.alaska.gov/dph/Pages/default.aspx>  
<https://health.alaska.gov/dph/Emergency/Pages/prepared/default.aspx>

**NTAS Bulletin**

The U.S. Department of Homeland Security issued an updated National Terrorism Advisory Bulletin on May 24, 2023. The current and expired bulletins can be viewed at the below link.  
<https://www.dhs.gov/national-terrorism-advisory-system>

**Travel Alerts and Conditions**

For current driving conditions, dial 511 or visit: <https://511.alaska.gov/>

**Barry Arm Landslide / Tsunami Risk**

For the latest information on the Barry Arm Landslide and Tsunami risk, click here:  
<https://dggs.alaska.gov/hazards/barry-arm-landslide.html>

## Earthquakes

United States Geological Service (USGS) Earthquake Information: <http://earthquake.usgs.gov/>  
National Tsunami Warning Center: <http://tsunami.gov/>

## Alaska Volcanoes

**Great Sitkin** Alert Level: **Watch** and Aviation Color Code: **Orange**  
**Shishaldin** Alert Level: **Advisory** and Aviation Color Code: **Yellow**  
**Atka Volcanic Complex** Alert Level: **Advisory** and Aviation Color Code: **Yellow**

For Alaska Volcano updates, go to: <https://www.avo.alaska.edu/>

## Air Quality Index (AQI) Advisories

For the most up-to-date Air Quality Index Advisories:  
<http://dec.alaska.gov/Applications/Air/airtoolsweb/Home/Index>

## Spills of Oil and Hazardous Substances

The Alaska Division of Environmental Conservation (ADEC) Spill Prevention and Response page is located at:  
<https://dec.alaska.gov/spar/>

## Alaska Cyber Security Information

State Employees may sign up for cybersecurity notifications and alerts at  
<https://oit.alaska.gov/security>

Cybersecurity and Infrastructure Security Agency (CISA)-Cybersecurity Services and Tools:  
[www.cisa.gov/free-cybersecurity-services-and-tools](http://www.cisa.gov/free-cybersecurity-services-and-tools)

## Avalanche Hazard



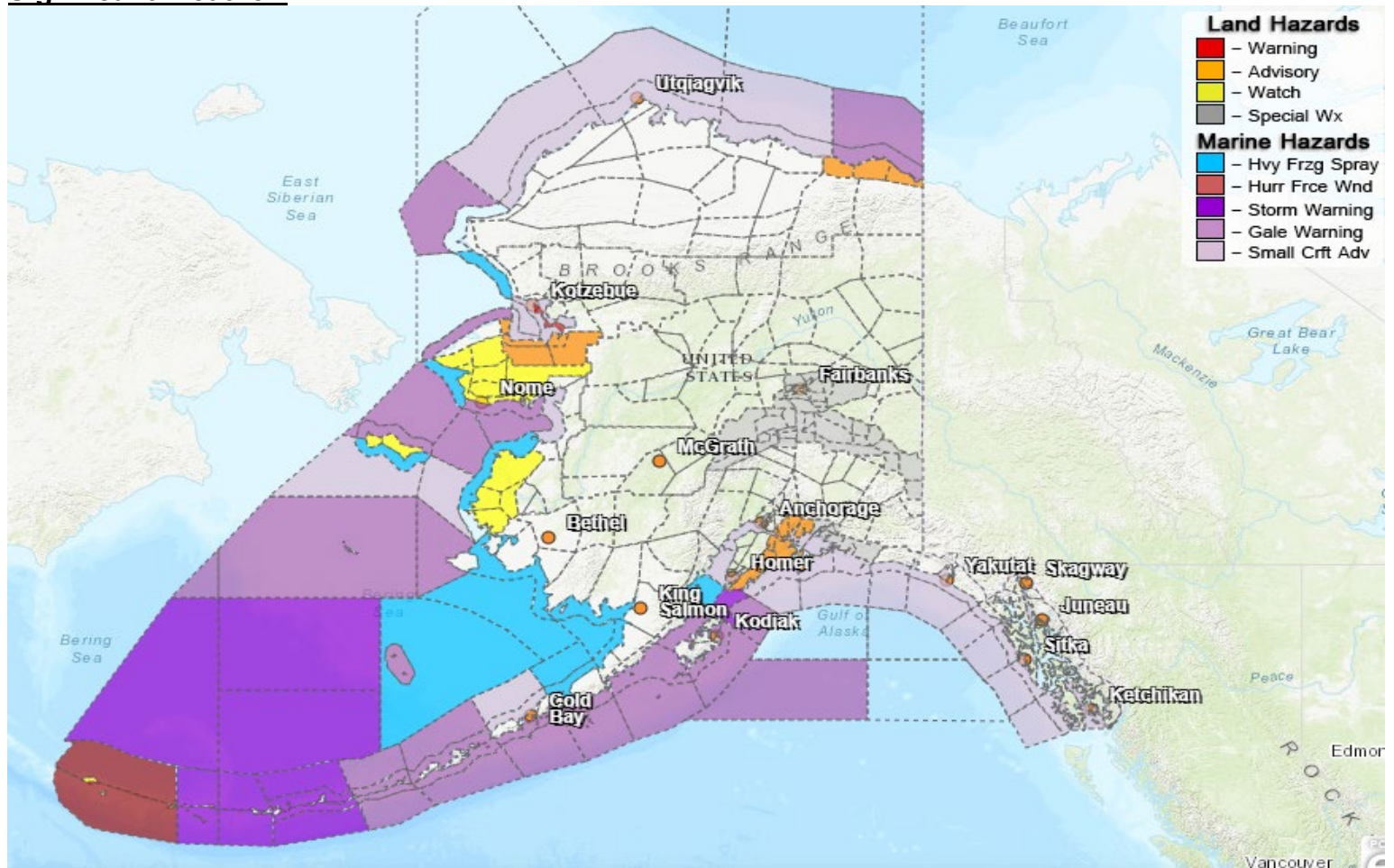
**Travel in avalanche terrain is not recommended. Avoid being on or beneath all steep slopes.**

**Turnagain Pass-** Considerable above 1000'

**Hatcher Pass-** Considerable above 3500' for wind slabs, Moderate below 3500'

For information and the most current avalanche conditions, go to <https://alaskasnow.org>

## Significant Weather:



### **Winter Storm Watch:**

- **St Lawrence Island, Yukon Delta Coast**-Tuesday afternoon through late Tuesday night
- **Bering Strait Coast, Southern Seward Peninsula Coast**-Tuesday through Wednesday evening
- **Southern Seward Peninsula Coast, Interior Seward Peninsula** -Tuesday evening through Wednesday

### **High Wind Watch:**

- **Western Aleutians**-Late Monday through Tuesday evening

### **Special Weather Statement:**

- **Northeast Prince William Sound, Southeast Prince William Sound**-bands of moderate to heavy snow showers along the coast through Tuesday
- **Upper Tanana Valley, Delta Junction, Upper Chena River Valley, Tanana Flats, Eielson AFB and Salcha, Goldstream Valley and Nenana Hills, Chatanika River Valley, Two Rivers, Fairbanks Metro Area, Nenana, Northern Denali Borough, Southern Denali Borough, Eastern Alaska Range North of Trims Camp, Eastern Alaska Range South of Trims Camp**-strong cold front and snow squalls expected late Monday through Tuesday

### **Blizzard Warning:**

- **Baldwin Peninsula**- until 11 am this morning

### **Winter Weather Advisory:**

- **Northern Seward Peninsula**- until noon today
- **Eastern Beaufort Sea Coast**- until 1pm today
- **Pribilof Island**- 6pm this evening until 1 am Tuesday

- **East Turnagain Arm-** in effect until 4pm this afternoon

For more information and the most current weather, Watches / Warnings / Advisories go to:

<https://www.weather.gov/arh/>

**The Next Situation Report** will be **April 2, 2024**. A significant change in the situation or the threat level will prompt an interim report. This report is posted on the internet at <https://ready.alaska.gov/sitrep>.

To register for email distribution, go to <http://list.state.ak.us/mailman/listinfo/dhsem.situation.report>.

Direct questions regarding this report to the SEOC at 907-428-7100 or [seoc@alaska.gov](mailto:seoc@alaska.gov).